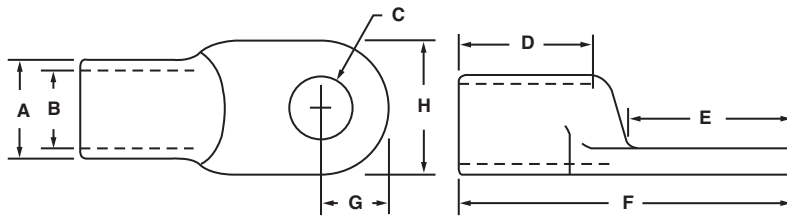


## Copper Soldering Lugs

### One Hole Tongue with Closed Transition

#### Type SL

- Manufactured from high strength seamless copper tubing
- Lug marked with wire size, catalog number, and amp rating for easy identification
- Connectors are suitable for voltages up to 35 KV



CATALOG NUMBER	CONDUCTOR SIZE	AMP. RATING	APPROXIMATE DIMENSIONS (IN.)								TONGUE STYLE
			A	B	C	D	E	F	G	H	
SL-25	10 Str.	25	.19	.14	.17	.34	.47	.94	.19	.25	Round
SL-35	8 Str.	35	.25	.19	.20	.34	.50	1.03	.22	.38	Round
SL-50	6 Str.	50	.31	.24	.20	.38	.59	1.22	.25	.44	Round
SL-70	4 Str.	70	.38	.29	.28	.44	.69	1.38	.28	.53	Round
SL-90	2 Str.	90	.44	.35	.28	.50	.75	1.50	.34	.63	Round
SL-125	1/0 Str.	125	.50	.40	.34	.56	.81	1.75	.41	.75	Round
SL-150	2/0 Str.	150	.56	.46	.41	.69	.94	2.00	.44	.81	Round
SL-175	3/0 Str.	175	.63	.52	.41	.75	1.00	2.13	.50	.91	Round
SL-225	4/0 Str.	225	.69	.56	.41	.84	1.16	2.38	.53	.97	Round
SL-250	250 kcmil	250	.81	.66	.41	.97	1.25	2.66	.63	1.19	Round
SL-325	400 kcmil	325	.94	.78	.41	1.19	1.63	3.38	.75	1.38	Square
SL-400	500 kcmil	400	1.06	.89	.41	1.50	2.13	4.16	.94	1.56	Square
SL-450	600 kcmil	450	1.13	.94	.41	1.50	2.25	4.44	1.00	1.63	Square
SL-550	800 kcmil	550	1.31	1.08	.53	2.00	2.50	5.06	1.13	1.94	Square
SL-650	1000 kcmil	650	1.44	1.21	.91	2.00	2.50	5.38	1.19	2.13	Square